

Fixture Type: \_\_\_\_\_

Catalog Number: \_\_\_\_\_

Project: \_\_\_\_\_

Location: \_\_\_\_\_

## Trio

### Bathroom Sconce 3000K

Model & Size	Color Temp & CRI	Finish	Watt	LED Lumens	Delivered Lumens	Title 24
WS-51820 20"	3000K 90	CH Chrome	19.58W	1522	1061	Yes

Example: **WS-51820-CH**

#### DESCRIPTION

A subtly retro-inspired piece that's totally modern at the same time, Trio's evenly illuminated strips hover above a polished chrome backplate, creating an interesting yet understated accent in blissful bathrooms and commercial spas alike. Mount it over a vanity or vertically as a sconce.

#### FEATURES

- Three individual illumination chrome plated elements
- Driver concealed within the fixture
- 5 year warranty

#### SPECIFICATIONS

<b>Color Temp:</b>	3000K
<b>Input:</b>	120-277 VAC, 50/60Hz
<b>CRI:</b>	90
<b>Dimming:</b>	ELV: 100 - 5%, 0-10V: 100 - 5%, TRIAC: 100 - 5%
<b>Rated Life:</b>	50000 Hours
<b>Mounting:</b>	Can be mounted on wall in all orientations
<b>Standards:</b>	ETL, cETL, Title 24 JA8-2016 Compliant Damp Location Listed
<b>Construction:</b>	Aluminum hardware with three flexible composite diffusers

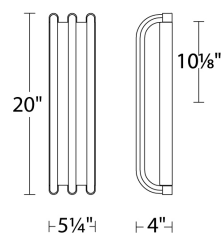


#### FINISHES



Chrome

#### LINE DRAWING



**WS-51820**

Fixture Type: \_\_\_\_\_

Catalog Number: \_\_\_\_\_

Project: \_\_\_\_\_

Location: \_\_\_\_\_

## Trio

### Bathroom Sconce 3000K

Model & Size	Color Temp & CRI	Finish	Watt	LED Lumens	Delivered Lumens	Title 24
WS-51828 28"	3000K 90	CH Chrome	27.39W	2602	1821	Yes

Example: **WS-51828-CH**

#### DESCRIPTION

A subtly retro-inspired piece that's totally modern at the same time, Trio's evenly illuminated strips hover above a polished chrome backplate, creating an interesting yet understated accent in blissful bathrooms and commercial spas alike. Mount it over a vanity or vertically as a sconce.

#### FEATURES

- Three individual illumination chrome plated elements
- Driver concealed within the fixture
- 5 year warranty

#### SPECIFICATIONS

<b>Color Temp:</b>	3000K
<b>Input:</b>	120-277 VAC, 50/60Hz
<b>CRI:</b>	90
<b>Dimming:</b>	ELV: 100 - 5%, 0-10V: 100 - 5%, TRIAC: 100 - 5%
<b>Rated Life:</b>	50000 Hours
<b>Mounting:</b>	Can be mounted on wall in all orientations
<b>Standards:</b>	ETL, cETL, Title 24 JA8-2016 Compliant Damp Location Listed
<b>Construction:</b>	Aluminum hardware with three flexible composite diffusers

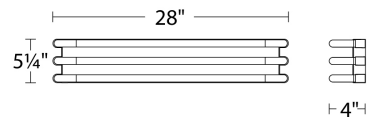


#### FINISHES



Chrome

#### LINE DRAWING



**WS-51828**

Fixture Type: \_\_\_\_\_

Catalog Number: \_\_\_\_\_

Project: \_\_\_\_\_

Location: \_\_\_\_\_

## Trio

### Bathroom Sconce 3000K

Model & Size	Color Temp & CRI	Finish	Watt	LED Lumens	Delivered Lumens	Title 24
WS-51837 37"	3000K 90	CH Chrome	34.31W	3351	2346	Yes

Example: **WS-51837-CH**

#### DESCRIPTION

A subtly retro-inspired piece that's totally modern at the same time, Trio's evenly illuminated strips hover above a polished chrome backplate, creating an interesting yet understated accent in blissful bathrooms and commercial spas alike. Mount it over a vanity or vertically as a sconce.

#### FEATURES

- Three individual illumination chrome plated elements
- Driver concealed within the fixture
- 5 year warranty

#### SPECIFICATIONS

<b>Color Temp:</b>	3000K
<b>Input:</b>	120-277 VAC, 50/60Hz
<b>CRI:</b>	90
<b>Dimming:</b>	ELV: 100 - 5%, 0-10V: 100 - 5%, TRIAC: 100 - 5%
<b>Rated Life:</b>	50000 Hours
<b>Mounting:</b>	Can be mounted on wall in all orientations
<b>Standards:</b>	ETL, cETL, Title 24 JA8-2016 Compliant Damp Location Listed
<b>Construction:</b>	Aluminum hardware with three flexible composite diffusers

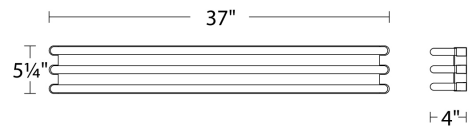


#### FINISHES



Chrome

#### LINE DRAWING



**WS-51837**