

WAC LIGHTING

Fixture Type: _____

Catalog Number: _____

Project: _____

Location: _____

Oculux 3.5" Downlight Square

Model	Beam	Color Temp & CRI	Lumens	CBCP	Finish
R3BSD	F 50°	927 2700K - 90	850	1240	BN Brushed Nickel HZWT Haze/White WT White
		930 3000K - 90	915	1333	
	N 25°	927 2700K - 90	860	2485	
		930 3000K - 90	925	2671	
	S 15°	927 2700K - 90	865	4382	
		930 3000K - 90	930	4710	

Example: **R3BSD-F927-BN**

DESCRIPTION

Oculux 3.5" is an architectural grade recessed downlight available in an IC-Rated Airtight new construction or IC-Rated remodel housing sold separately. Oculux is Energy Star Rated and CEC Title 24 Compliant with Wet Location listing which means it can be installed in a broad range of applications. 35° visual cutoff provides superb glare reduction. Available in round or square open reflector and adjustable trim options.

FEATURES

- Shallow housing under 4in depth
- Single spot light source
- 5 year warranty

SPECIFICATIONS

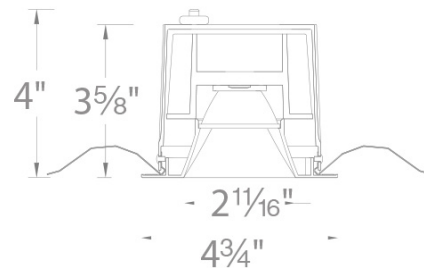
Construction:	Die-cast aluminum trim and heat sink
Power:	11W
Light Source:	Integrated LED 3 Step Mac Adam Ellipse
Rated Life:	50000 Hours
Mounting:	Heavy gauge retention clips support trim firmly
Finish:	Enamel Coated Brushed Nickel, Enamel Coated Haze/White, Electroplated White
Operating Temp:	-4°F to 104°F (-20°C to 40°C)
Standards:	ETL, cETL, Wet Location Listed, Energy Star 2.0, Title 24 JA8-2016 Compliant



FINISHES



LINE DRAWING



WAC LIGHTING

Oculux 3.5" Remodel Housing

Model & Product

R3BBRT-10 Oculux 3.5" LED Remodel IC-Rated Housing

Example: **R3BBRT-10**

DESCRIPTION

Oculux 3.5" is an architectural grade recessed downlight available in an IC-Rated Airtight new construction or IC-Rated remodel housing sold separately. Oculux is Energy Star Rated and CEC Title 24 Compliant with Wet Location listing which means it can be installed in a broad range of applications. 35° visual cutoff provides superb glare reduction. Available in round or square open reflector and adjustable trim options.

FEATURES

- Shallow housing under 4in depth
- Driver concealed within the fixture
- 5 year warranty

SPECIFICATIONS

Construction:	20 gauge cold rolled steel wiring box
Power:	11W
Input:	120 VAC, 50/60Hz
Dimming:	TRIAC: 100-5%, ELV: 100-5%, 0-10V: 100-5%
Rated Life:	50000 Hours
Mounting:	Heavy gauge retention clips secures housing firmly to ceiling
Cut Out:	4 1/4"
Finish:	
Ceiling Thickness:	1/2" - 1"
Operating Temp:	-4°F to 104°F (-20°C to 40°C)
Standards:	ETL, cETL, IC, Airtight

Fixture Type: _____

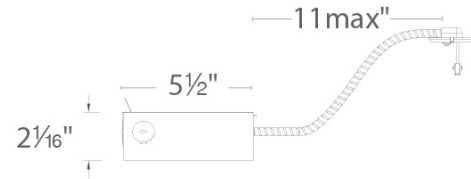
Catalog Number: _____

Project: _____

Location: _____



LINE DRAWING



Fixture Type: _____

Catalog Number: _____

Project: _____

Location: _____

Oculux 3.5"

New Construction Housing

Model

R3BNICA-10 Oculux 3.5" LED
New Construction IC-Rated Airtight
Housing (120V)
R3BNICA-10U-EM Oculux 3.5"
LED New Construction IC-Rated
Airtight Housing (120-277V)
R3BNICA-10U Oculux 3.5" LED
New Construction IC-Rated Airtight
Housing (120-277V)

DESCRIPTION

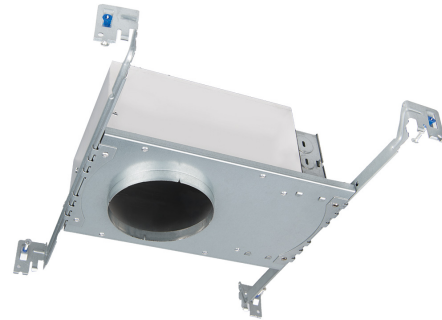
Oculux 3.5" is a structural grade recessed downlight available in an IC-Rated Airtight new construction or IC-Rated remodel housing sold separately. Oculux is Energy Star Rated and CEC Title 24 Compliant with Wet Location listing which means it can be installed in a broad range of applications. 35° visual cutoff provides superb glare reduction. Available in round or square open reflector and adjustable trim options.

FEATURES

- Shallow housing under 4in depth
- Driver concealed within the fixture
- 5 year warranty

SPECIFICATIONS

Construction:	20 gauge cold rolled steel wiring box
Power:	11W
Input:	120 VAC, 120-277 VAC, 50/60Hz
Dimming:	TRIAC: 100-5%, ELV: 100-5%, 0-10V: 100-5%
Rated Life:	50000 Hours
Mounting:	Heavy gauge retention clips secures housing firmly to ceiling
Cut Out:	4 1/4"
Finish:	
Ceiling Thickness:	1/2" - 1"
Operating Temp:	-4°F to 104°F (-20°C to 40°C)
Standards:	ETL, cETL, IC, Airtight



LINE DRAWING

