

WAC LIGHTING

2.5" Low Voltage

New Construction Non-IC Housing

Model & Product

HR-802 2.5in Low Voltage New Construction Non-IC Housing

Example: **HR-802**

DESCRIPTION

Superb performance delivered in a small package. The 2.5" Low Voltage Recessed Downlight series offers smooth and crisp light for under cabinet and tight recessed spaces where miniature apertures are desired. May be used with any WAC compatible 2.5" HR-837, HR-834, or HR-836 trims.

FEATURES

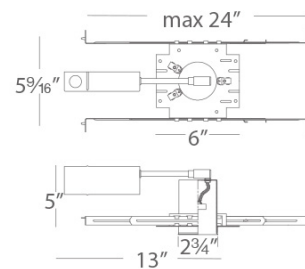
- 3" clearance on all sides when insulation is present
- Total depth of 4", one of the lowest profile recessed units available
- Low profile housing
- Transformer included
- 5 year warranty

SPECIFICATIONS

Construction:	20 gauge steel
Power:	50W
Input:	120 VAC, 50/60Hz
Dimming:	ELV: 100-10%
Light Source:	Halogen MR16
Mounting:	Supplied with hanger bars, adjustable from 15"-242" to accommodate various joist construction and grid sizes.
Cut Out:	3"
Ceiling Thickness:	3/4"
Operating Temp:	-4°F to 104°F (-20°C to 40°C)
Standards:	UL, cUL, Damp Location Listed, Non IC



LINE DRAWING



WAC LIGHTING

2.5" Low Voltage Step Baffle Trim

Model & Light Source	Lumens	Finish
HR-834 Halogen MR16		WT White
HR-834LED LED MR16		WT/WT White/White

Example: **HR-834-WT**

DESCRIPTION

Superb performance delivered in a small package. The 2.5" Low Voltage Recessed Downlight series offers smooth and crisp light for under cabinet and tight recessed spaces where miniature apertures are desired. For use with HR-800 series low voltage housings. Accepts MR16 LED or incandescent lamp 50W max, housing and lamp are sold separately.

FEATURES

- Accommodates most LED MR16 or Halogen MR16 lamps
- Retention clips secure lens firmly to lamp
- Clear lens included, replaceable lens options available
- 5 year warranty

SPECIFICATIONS

Construction:	20 gauge steel
Light Source:	Halogen MR16, LED MR16
Finish:	Electrostatically Powder Coated White, White/White
Operating Temp:	-4°F to 104°F (-20°C to 40°C)
Standards:	UL, cUL, Damp Location Listed

Fixture Type: _____

Catalog Number: _____

Project: _____

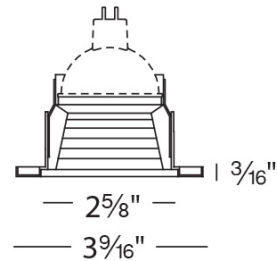
Location: _____



FINISHES



LINE DRAWING



WAC LIGHTING

2.5" Low Voltage Downlight Trim

Model & Light Source	Lumens	Finish
HR-836 Halogen MR16		BN Brushed Nickel
HR-836LED LED MR16		CB Copper Bronze
		WT White

Example: **HR-836-BN**

DESCRIPTION

Superb performance delivered in a small package. The 2.5" Low Voltage Recessed Downlight series offers smooth and crisp light for under cabinet and tight recessed spaces where miniature apertures are desired. For use with HR-800 series low voltage housings. Accepts MR16 LED or incandescent lamp 50W max, housing and lamp are sold separately.

FEATURES

- Accommodates most LED MR16 or Halogen MR16 lamps
- Retention clips secure lens firmly to lamp
- Clear lens included, replaceable lens options available
- 5 year warranty

SPECIFICATIONS

Construction:	20 gauge steel with die-cast aluminum baffle
Light Source:	Halogen MR16, LED MR16
Finish:	Electrostatically Powder Coated White, Electroplated Brushed Nickel, Electroplated Copper Bronze
Operating Temp:	-4°F to 104°F (-20°C to 40°C)
Standards:	UL, cUL, Damp Location Listed

Fixture Type: _____

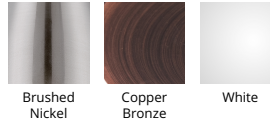
Catalog Number: _____

Project: _____

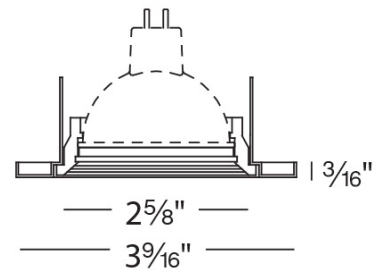
Location: _____



FINISHES



LINE DRAWING



WAC LIGHTING

2.5" Low Voltage Adjustable Trim

Model & Light Source	Lumens	Finish
HR-837 Halogen MR16		BK Black
HR-837LED LED MR16		BN Brushed Nickel
		CB Copper Bronze
		WT White

Example: **HR-837-BK**

DESCRIPTION

Superb performance delivered in a small package. The 2.5" Low Voltage Recessed Downlight series offers smooth and crisp light for under cabinet and tight recessed spaces where miniature apertures are desired. For use with HR-800 series low voltage housings. Accepts MR16 LED or incandescent lamp 50W max, housing and lamp are sold separately.

FEATURES

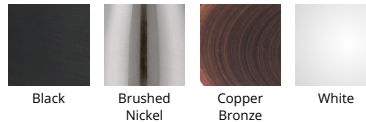
- Accommodates most LED MR16 or Halogen MR16 lamps
- Retention clips secure lens firmly to lamp
- Clear lens included, replaceable lens options available
- 5 year warranty

SPECIFICATIONS

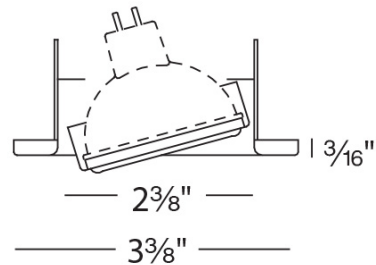
Construction:	20 gauge steel
Light Source:	Halogen MR16, LED MR16
Finish:	Electrostatically Powder Coated White, Electroplated Brushed Nickel, Black, Electroplated Copper Bronze
Operating Temp:	-4°F to 104°F (-20°C to 40°C)
Standards:	UL, cUL, Damp Location Listed



FINISHES



LINE DRAWING



Fixture Type: _____

Catalog Number: _____

Project: _____

Location: _____