

WAC LIGHTING

4" Low Voltage

Die-Cast Adjustable Specular Square Trim

Model & Light Source	Lumens	Finish
HR-D412-S Halogen MR16		SC/BN Specular Clear/Brushed Nickel
HR-D412LED-S LED MR16		SC/WT Specular Clear/White

Example: **HR-D412-S-SC/BN**

DESCRIPTION

Engineered for high-performance in a compact fixture, 4" Low Voltage Recessed Downlights are styled with form and function. Available for Non-IC installations, a variety of decorative adjustable and Wet Location trim options are available.

FEATURES

- Accommodates most LED MR16 or Halogen MR16 lamps
- Center lamp holder allows lamp to be tilted up to 35° from vertical
- The supplied clear glass lens can be replaced with one lens accessory
- Steel spring clips secure trim to housing
- 5 year warranty

SPECIFICATIONS

Construction:	Die-cast aluminum
Input:	12 VAC
Light Source:	Halogen MR16, LED MR16
Finish:	Electrostatically Powder Coated Specular Clear/White, Electroplated Specular Clear/Brushed Nickel
Standards:	UL, cUL, Damp Location Listed

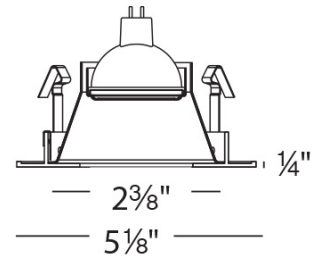
Fixture Type: _____
Catalog Number: _____
Project: _____
Location: _____



FINISHES



LINE DRAWING



Fixture Type: _____

Catalog Number: _____






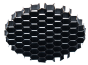
Project: _____

Location: _____

4" Low Voltage

Die-Cast Adjustable Specular Square Trim

ACCESSORIES

	<i>Model</i>	<i>Description</i>	<i>Finish</i>
	LENS-16-AMB LENS-16-BLU LENS-16-GRN LENS-16-RED	<i>Colored Lens</i> <i>Colored Lens</i> <i>Colored Lens</i> <i>Colored Lens</i>	<i>Amber</i> <i>Blue</i> <i>Green</i> <i>Red</i>
	LENS-16-FR	<i>Clear/Frosted Lens</i>	<i>Frosted</i>
	LENS-16-SPR	<i>Spread Lens</i>	<i>Spread Lens</i>
	LENS-16-UVF	<i>UV Filter lens</i>	<i>Clear</i>
	LENS-16-BEL	<i>Beam Elongating Lens</i>	<i>Beam Elongating</i>
	LENS-16-HCL	<i>Honeycomb Louver</i>	<i>Black</i>

WAC LIGHTING

4" Low Voltage Remodel Non-IC Housing

Model & Product

HR-8401E 4in Electronic Low Voltage Remodel Non-IC Housing

Example: **HR-8401E**

DESCRIPTION

Engineered for high-performance in a compact fixture, 4" Low Voltage Recessed Downlights are styled with form and function. Available with a variety of decorative adjustable and wet location trim options are available.

FEATURES

- Integral electronic transformer
- J-Box and transformer accessible through ceiling
- Advanced auto-reset, soft start and short circuit protection features
- Supplied thermal protector protects against over-lamping
- Suitable for 2" 6" joist installations, for use in shallow applications
- Transformer included
- 5 year warranty

SPECIFICATIONS

Construction:	20 gauge galvanized steel
Power:	50W
Input:	120 VAC, 50/60Hz
Dimming:	ELV: 100-10%
Light Source:	Halogen
Mounting:	Two heavy gauge inner retention clips push out onto ceiling or other mounting surface to firmly hold housing in place
Cut Out:	4 9/16"
Ceiling Thickness:	3/4"
Operating Temp:	-4°F to 104°F (-20°C to 40°C)
Standards:	UL, cUL, Damp Location Listed, Non IC

Fixture Type: _____

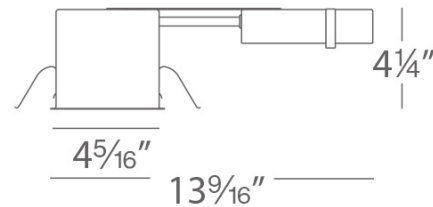
Catalog Number: _____

Project: _____

Location: _____



LINE DRAWING



4" Low Voltage New Construction Non-IC Housing

Fixture Type: _____

Catalog Number: _____

Project: _____

Location: _____

Model & Product

HR-8402E 4in Electronic Low Voltage New Construction Non-IC Housing

Example: **HR-8402E**

DESCRIPTION

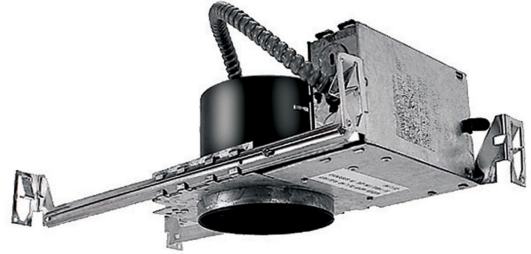
Engineered for high-performance in a compact fixture, 4" Low Voltage Recessed Downlights are styled with form and function. Available with a variety of decorative adjustable and Wet Location trim options are available.

FEATURES

- Integral electronic transformer
- J-Box and transformer accessible through ceiling
- Advanced auto-reset, soft start and short circuit protection features
- Supplied thermal protector protects against over-lamping
- Transformer included
- 5 year warranty

SPECIFICATIONS

Construction:	20 gauge galvanized steel
Power:	50W
Input:	120 VAC, 50/60Hz
Dimming:	ELV: 100-10%
Light Source:	Halogen
Mounting:	Supplied with hanger bars, adjustable from 15"-242" to accommodate various joist construction and grid sizes.
Cut Out:	4 9/16"
Ceiling Thickness:	3/4"
Operating Temp:	-4°F to 104°F (-20°C to 40°C)
Standards:	UL, cUL, Damp Location Listed, Non IC



LINE DRAWING

