

# WAC LIGHTING

## Oculux 3.5" New Construction Housing

### Model

R3BNICA-10 Oculux 3.5" LED  
New Construction IC-Rated Airtight  
Housing (120V)  
R3BNICA-10U-EM Oculux 3.5"  
LED New Construction IC-Rated  
Airtight Housing (120-277V)  
R3BNICA-10U Oculux 3.5" LED  
New Construction IC-Rated Airtight  
Housing (120-277V)

### DESCRIPTION

Oculux 3.5" is a structural grade recessed downlight available in an IC-Rated Airtight new construction or IC-Rated remodel housing sold separately. Oculux is Energy Star Rated and CEC Title 24 Compliant with Wet Location listing which means it can be installed in a broad range of applications. 35° visual cutoff provides superb glare reduction. Available in round or square open reflector and adjustable trim options.

### FEATURES

- Shallow housing under 4in depth
- Driver concealed within the fixture
- 5 year warranty

### SPECIFICATIONS

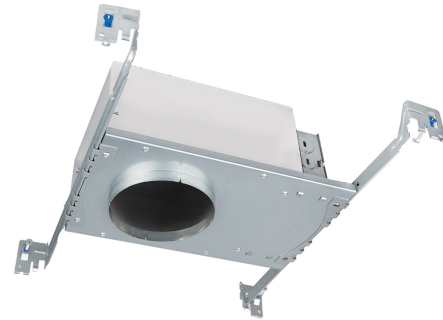
Construction:	20 gauge cold rolled steel wiring box
Power:	11W
Input:	120 VAC, 120-277 VAC, 50/60Hz
Dimming:	TRIAC: 100-5%, ELV: 100-5%, 0-10V: 100-5%
Rated Life:	50000 Hours
Mounting:	Heavy gauge retention clips secures housing firmly to ceiling
Cut Out:	4 1/4"
Finish:	
Ceiling Thickness:	1/2" - 1"
Operating Temp:	-4°F to 104°F (-20°C to 40°C)
Standards:	ETL, cETL, IC, Airtight

Fixture Type: \_\_\_\_\_

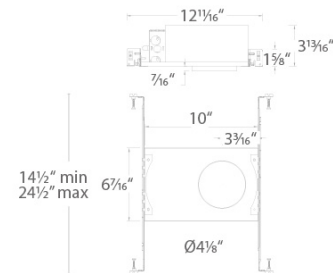
Catalog Number: \_\_\_\_\_

Project: \_\_\_\_\_

Location: \_\_\_\_\_



### LINE DRAWING



# WAC LIGHTING

Fixture Type: \_\_\_\_\_

Catalog Number: \_\_\_\_\_

Project: \_\_\_\_\_

Location: \_\_\_\_\_

## Oculux 3.5"

0° - 35° Adjustable Round

Model	Beam	Color Temp & CRI	Lumens	CBCP	Finish
R3BRA	F 50°	927 2700K - 90	900	1196	BN Brushed Nickel
		930 3000K - 90	970	1285	WT White
	N 25°	927 2700K - 90	915	2513	
		930 3000K - 90	985	2701	
	S 15°	927 2700K - 90	900	4384	
		930 3000K - 90	970	4712	

Example: **R3BRA-F927-BN**

### DESCRIPTION

Oculux 3.5" is an architectural grade recessed downlight available in an IC-Rated Airtight new construction or IC-Rated remodel housing sold separately. Oculux is Energy Star Rated and CEC Title 24 Compliant with Wet Location listing which means it can be installed in a broad range of applications. 35° visual cutoff provides superb glare reduction. Available in round or square open reflector and adjustable trim options.

### FEATURES

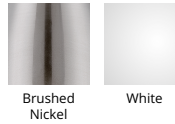
- Shallow housing under 4in depth
- Single spot light source
- 5 year warranty

### SPECIFICATIONS

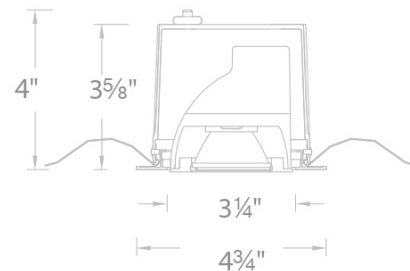
<b>Construction:</b>	Die-cast aluminum trim and heat sink
<b>Power:</b>	11W
<b>Light Source:</b>	Integrated LED 3 Step Mac Adam Ellipse
<b>Rated Life:</b>	50000 Hours
<b>Mounting:</b>	Heavy gauge retention clips support trim firmly
<b>Finish:</b>	Electrostatically Powder Coated White, Electroplated Brushed Nickel
<b>Operating Temp:</b>	-4°F to 104°F (-20°C to 40°C)
<b>Standards:</b>	ETL, cETL, Damp Location Listed, Energy Star 2.0, Title 24 JA8-2016 Compliant



### FINISHES



### LINE DRAWING



Fixture Type: \_\_\_\_\_

Catalog Number: \_\_\_\_\_

Project: \_\_\_\_\_

Location: \_\_\_\_\_

## Oculux 3.5" Downlight Round

Model	Beam	Color Temp & CRI	Lumens	CBCP	Finish
R3BRD	F 50°	927 2700K - 90	900	1308	BN Brushed Nickel HZWT Haze/White WT White
		930 3000K - 90	970	1406	
	N 25°	927 2700K - 90	895	2767	
		930 3000K - 90	965	2973	
	S 15°	927 2700K - 90	895	4776	
		930 3000K - 90	965	5132	

Example: **R3BRD-F927-BN**

### DESCRIPTION

Oculux 3.5" is an architectural grade recessed downlight available in an IC-Rated Airtight new construction or IC-Rated remodel housing sold separately. Oculux is Energy Star Rated and CEC Title 24 Compliant with Wet Location listing which means it can be installed in a broad range of applications. 35° visual cutoff provides superb glare reduction. Available in round or square open reflector and adjustable trim options.

### FEATURES

- Shallow housing under 4in depth
- Single spot light source
- 5 year warranty

### SPECIFICATIONS

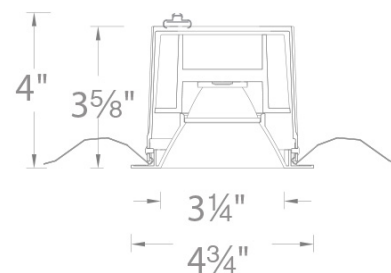
<b>Construction:</b>	Die-cast aluminum trim and heat sink
<b>Power:</b>	11W
<b>Light Source:</b>	Integrated LED 3 Step Mac Adam Ellipse
<b>Rated Life:</b>	50000 Hours
<b>Mounting:</b>	Heavy gauge retention clips support trim firmly
<b>Finish:</b>	Electrostatically Powder Coated White, Enamel Coated Haze/White, Electroplated Brushed Nickel
<b>Operating Temp:</b>	-4°F to 104°F (-20°C to 40°C)
<b>Standards:</b>	ETL, cETL, Wet Location Listed, Energy Star 2.0, Title 24 JA8-2016 Compliant



### FINISHES



### LINE DRAWING



Fixture Type: \_\_\_\_\_

Catalog Number: \_\_\_\_\_

Project: \_\_\_\_\_

Location: \_\_\_\_\_

## Oculux 3.5"

### Polycarbonate Downlight Round

Model	Beam	Color Temp & CRI	Lumens	CBCP	Finish
R3BRDP	F 50°	927 2700K - 90	950	1294	WT White
		930 3000K - 90	1015	1382	
	N 25°	927 2700K - 90	950	2778	
		930 3000K - 90	1025	2985	
	S 15°	927 2700K - 90	955	4918	
		930 3000K - 90	1005	5144	

Example: **R3BRDP-F927-WT**

#### DESCRIPTION

Oculux 3.5" is an architectural grade recessed downlight available in an IC-Rated Airtight new construction or IC-Rated remodel housing sold separately. Oculux is Energy Star Rated and CEC Title 24 Compliant with Wet Location listing which means it can be installed in a broad range of applications. 35° visual cutoff provides superb glare reduction. Available in round or square open reflector and adjustable trim options.

#### FEATURES

- Shallow housing under 4in depth
- Single spot light source
- Conforms to local code dead front requirements
- 5 year warranty

#### SPECIFICATIONS

<b>Construction:</b>	Polycarbonate trim and die-cast aluminum heat sink
<b>Power:</b>	11W
<b>Light Source:</b>	Integrated LED 3 Step Mac Adam Ellipse
<b>Rated Life:</b>	50000 Hours
<b>Mounting:</b>	Heavy gauge retention clips support trim firmly
<b>Finish:</b>	Electrostatically Powder Coated White
<b>Operating Temp:</b>	-4°F to 104°F (-20°C to 40°C)
<b>Standards:</b>	ETL, cETL, Wet Location Listed, Energy Star 2.0, Title 24 JA8-2016 Compliant

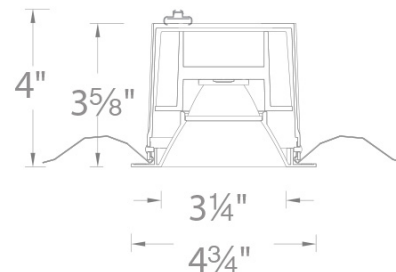


#### FINISHES



White

#### LINE DRAWING



# WAC LIGHTING

Fixture Type: \_\_\_\_\_

Catalog Number: \_\_\_\_\_

Project: \_\_\_\_\_

Location: \_\_\_\_\_

## Oculux 3.5" 0° - 35° Adjustable Square

Model	Beam	Color Temp & CRI	Lumens	CBCP	Finish
R3BSA	F 50°	927 2700K - 90	900	1196	BN Brushed Nickel
		930 3000K - 90	970	1285	WT White
	N 25°	927 2700K - 90	915	2513	
		930 3000K - 90	985	2701	
	S 15°	927 2700K - 90	900	4384	
		930 3000K - 90	970	4712	

Example: **R3BSA-F927-BN**

### DESCRIPTION

Oculux 3.5" is an architectural grade recessed downlight available in an IC-Rated Airtight new construction or IC-Rated remodel housing sold separately. Oculux is Energy Star Rated and CEC Title 24 Compliant with Wet Location listing which means it can be installed in a broad range of applications. 35° visual cutoff provides superb glare reduction. Available in round or square open reflector and adjustable trim options.

### FEATURES

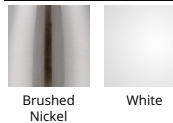
- Shallow housing under 4in depth
- Single spot light source
- 5 year warranty

### SPECIFICATIONS

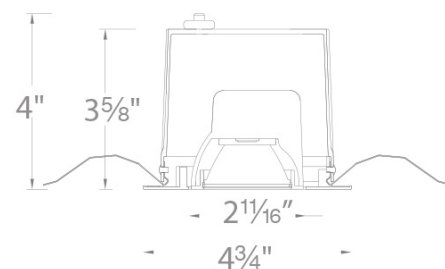
<b>Construction:</b>	Die-cast aluminum trim and heat sink
<b>Power:</b>	11W
<b>Light Source:</b>	Integrated LED 3 Step Mac Adam Ellipse
<b>Rated Life:</b>	50000 Hours
<b>Mounting:</b>	Heavy gauge retention clips support trim firmly
<b>Finish:</b>	Electroplated Brushed Nickel, Electrostatically Powder Coated White
<b>Operating Temp:</b>	-4°F to 104°F (-20°C to 40°C)
<b>Standards:</b>	ETL, cETL, Damp Location Listed, Energy Star 2.0, Title 24 JA8-2016 Compliant



### FINISHES



### LINE DRAWING



Fixture Type: \_\_\_\_\_

Catalog Number: \_\_\_\_\_

Project: \_\_\_\_\_

Location: \_\_\_\_\_

## Oculux 3.5" Downlight Square

Model	Beam	Color Temp & CRI	Lumens	CBCP	Finish
R3BSD	F 50°	927 2700K - 90	850	1240	BN Brushed Nickel HZWT Haze/White WT White
		930 3000K - 90	915	1333	
	N 25°	927 2700K - 90	860	2485	
		930 3000K - 90	925	2671	
	S 15°	927 2700K - 90	865	4382	
		930 3000K - 90	930	4710	

Example: **R3BSD-F927-BN**

### DESCRIPTION

Oculux 3.5" is an architectural grade recessed downlight available in an IC-Rated Airtight new construction or IC-Rated remodel housing sold separately. Oculux is Energy Star Rated and CEC Title 24 Compliant with Wet Location listing which means it can be installed in a broad range of applications. 35° visual cutoff provides superb glare reduction. Available in round or square open reflector and adjustable trim options.

### FEATURES

- Shallow housing under 4in depth
- Single spot light source
- 5 year warranty

### SPECIFICATIONS

<b>Construction:</b>	Die-cast aluminum trim and heat sink
<b>Power:</b>	11W
<b>Light Source:</b>	Integrated LED 3 Step Mac Adam Ellipse
<b>Rated Life:</b>	50000 Hours
<b>Mounting:</b>	Heavy gauge retention clips support trim firmly
<b>Finish:</b>	Enamel Coated Brushed Nickel, Enamel Coated Haze/White, Electroplated White
<b>Operating Temp:</b>	-4°F to 104°F (-20°C to 40°C)
<b>Standards:</b>	ETL, cETL, Wet Location Listed, Energy Star 2.0, Title 24 JA8-2016 Compliant



### FINISHES



### LINE DRAWING

